

Congratulations!
¡Enhorabuena!



SAINT LOUIS UNIVERSITY
MADRID

This brochure is enhanced with Augmented Reality



GO ON A VIRTUAL *campus tour*



SAN IGNACIO HALL



PADRE RUBIO HALL



PADRE ARRUPE HALL



Welcome

TO YOUR AUGMENTED REALITY (AR) ADMIT BROCHURE

Saint Louis University – Madrid Campus has partnered with BUNDLAR to provide you and your family this unique AR experience. AR technology places digital content in the physical world through a smartphone or tablet. In this brochure, we provide videos and links to our website. You'll "meet" some of our students and see for yourself what the SLU-Madrid community is really like.

How to use this brochure

1. Download the BUNDLAR app from the App Store (iOS) or Google Play (Android)



2. Enter the code: SLUMADRIDDEMO22
3. Look for the orange-outlined pages in this brochure with the AR logo at the bottom, signaling the availability of AR digital content.



4. Point your phone's camera screen at the augmented page.
5. Enjoy!

WHICH PAGES ARE AUGMENTED?

Look for the pages with the orange outlines.

Page 2: Go on a virtual campus tour

Page 3: Meet our Director and Academic Dean

Page 4: How to confirm your attendance

Page 6: Campus life

Page 7: Student housing: Where will you live?

Page 8: Get ready for Madrid



CONGRATULATIONS ON YOUR ADMITTANCE TO SAINT LOUIS UNIVERSITY!

An exciting experience awaits you at the Madrid Campus. As a member of our extraordinary international community, you will pursue your passions, share your dreams and discover yourself with classmates from around the world.

You may have chosen SLU-Madrid as your university because we're in Madrid. Or because we offer unique international degree programs. Or because we are an American university, which means we provide an academic culture characterized by innovative teaching and flexible programs.

Or because we offer you the power of Jesuit education, an education that has a higher purpose. We welcome men and women, like you, from all faith traditions. Our mission is to cultivate your mind, stir your spirits and educate you to become a compassionate leader.

There are many reasons to join our Class of 2025 or to transfer to SLU-Madrid. The next step, though, is yours. Please review what SLU-Madrid has to offer and confirm your place soon.

I look forward to welcoming you to SLU-Madrid in person!

Un saludo,



Paul Vita, Ph.D.
Director and Academic Dean





NEXT STEPS

How to confirm your attendance

Congratulations and welcome! You're about to embark on a journey that will carry you further than your years on campus. Saint Louis University's rigorous Jesuit education will provide you with the skills you need to be successful inside and outside the classroom. Your education will help you see the world – and your place in it – as a wondrous opportunity for growth and good works.



1. CONFIRMATION FEE

In order to confirm your attendance at SLU-Madrid, you must pay the non-refundable confirmation fee. You can do this by credit card at our secure link:
<http://apply.madrid.slu.edu/admitted/>

You'll need your Banner ID, which appears in your admit letter. You can also pay by bank transfer or in person in our Office of Finance.

Note that you will not be registered for classes until we have received your confirmation fee.

2. SUBMIT ALL REQUIRED DOCUMENTS

Review your admit letter to be sure that you have met any conditions specified. If you are currently a high school or university student, you will need to submit an official transcript at the end of the current semester/year.

You must also submit a color photo against a white background (for your student ID card) to your admissions counselor.

You may send these materials directly to your admissions counselor by email or to admissions-madrid@slu.edu. You may also submit these items by regular mail:

SAINT LOUIS UNIVERSITY-MADRID CAMPUS

Office of Admissions
Avenida del Valle, 34
28003 Madrid, Spain

SAINT LOUIS UNIVERSITY

Attn: Madrid Campus Admissions Counselor
DuBourg Hall, Room 149
One North Grand Blvd.
St. Louis, MO 63103-2097

3. OBTAIN YOUR VISA TO ENTER SPAIN

A visa is an endorsement placed in your passport that indicates that you are able to enter, exit and stay in a country (in this case, Spain) for a specific period of time. If you are not a legal resident of the European Union, you must apply for a visa to study at the Madrid Campus.

- a) You must obtain a 90-day visa if you plan to stay in Madrid for more than one semester. This type of student visa permits you to apply for your student residence card (NIE). You must apply for the NIE within 30 days of arriving in Spain and renew it every year that you continue studying at SLU-Madrid. The Office of Student Life will mentor you throughout the NIE application and renewal processes.
- b) If you plan to stay for only one semester, you will need to obtain a short-stay visa for 180 days.

Be sure to plan ahead because the visa process can take several months. The first step is to find out which Spanish consulate holds jurisdiction over the state, region, or country in which you now reside, and get an appointment to apply (must be within three months prior to the start of the semester.)

Gather the documentation your consulate requires, keeping in mind that certain documents can take weeks or even months to obtain. (U.S. citizens and permanent residents: If the FBI background check with the Apostille of The Hague is required by your consulate, you may want to use a service called a channeler to expedite the process. Ask your admissions counselor for more information).

Note that some consulates require an appointment to present your visa application, while other consulates accept walk-ins. If your consulate requires appointments, make sure to schedule yours well in advance.

SLU-Madrid will provide several documents that you need to present at the consulate when you apply for the visa, including information about health insurance coverage and an official admit letter in Spanish. Contact admissions for information about steps you need to take for the University to release these documents.

Visas for Minors

If you will be under the age of 18 when you apply for your student visa or when you come to Spain, you will most likely need to provide additional documents when you apply for your student visa.

- If you turn 18 in May (September for spring enrollment), we encourage you to submit your visa application on or after your birthday.
- If you turn 18 after May 31 (September 30 for spring enrollment), but before your arrival to Spain, you most likely will need to apply as a minor and will need to provide additional





documentation. Review the visa information on our website for additional information and contact your consulate for instructions.

- If you turn 18 after you plan to come to Spain, you must apply as a minor. Review the visa information on our website for additional information and contact your consulate for more information.

4. APPLY FOR HOUSING

All first-year students are required to live in university residence halls that are home not only to students at SLU-Madrid, but also other local universities. If you are a transfer student, you are free to choose the housing that best fits your needs. Detailed information is available on the web page.

5. BOOK YOUR TRAVEL

Plan to arrive in Madrid in time for the first-year and new transfer student Welcome Days, which begin on August 31 for Fall 2020 new students. The “housing move-out” date is the day after the last scheduled final exam. Final exams cannot be moved forward or deferred.


6. REGISTER FOR CLASSES

New student registration generally begins in June (for the fall semester) and November (for the spring semester). Academic advising will be in touch with you to get your schedule organized. Together with your advisor, you can create a study plan that’s centered on your interests and academic goals.

If you are transferring to SLU-Madrid from another institution, we will need to process your transfer credits. Send course descriptions and an official transcript showing all final grades to your admissions counselor. You may be asked to send additional materials later, such as a writing sample and/or course syllabi.

You can also receive credits for dual enrollment programs completed prior to high school graduation. These credits are evaluated in the same way as transfer credit (see above).

Saint Louis University rewards credit for some AP, IB and CLEP examinations. To receive credit for your examinations, you'll need to send an official score report to your academic advisor.

 Stay in touch with our Office of Advising at: advising-madrid@slu.edu

7. PLAN A CAMPUS VISIT OR ATTEND AN OPEN CAMPUS EVENT

Find out more about SLU-Madrid by visiting campus when it suits you. Meet current students and faculty, take a tour, enjoy a meal in the cafeteria and attend SLU-Madrid classes. The University also organizes three Open Campus events each year where you attend an afternoon of information sessions, get to know current students and faculty, and sample university classes.

8. WELCOME TO SLU-MADRID

Before classes commence, SLU-Madrid welcomes you to life at the University and in Spain through our Welcome Days. You will learn

about our academic programs, campus life and Madrid in general. You'll also have fun as you meet students, faculty and staff.

The school year officially opens with our Convocation Ceremony, a SLU tradition for all new and transfer students. Faculty and staff from across the University will welcome you (and your family!) to SLU-Madrid.

Timeline:

Oct. 1, 2020	FAFSA* submissions begin
Nov. 1, 2020	Application review begins
Feb. 1, 2021	FAFSA* priority deadline
August 2021	First tuition payment due
Aug. 29, 2021	First-year housing move-in date
Aug. 29, 2021	Host family housing move-in date (transfer students only)
Aug. 30-31, 2021	First-year and transfer student Welcome Days**
Aug. 31, 2021	Convocation Ceremony
Sept. 1, 2021	First day of Fall 2021 classes

* For U.S. citizens and permanent residents only.

CAMPUS *life*

Being a SLU-Madrid student is about more than just succeeding academically. In keeping with our Jesuit mission, we provide extracurricular opportunities for you to develop as a person – intellectually, physically, emotionally and spiritually.

CLUBS, ORGANIZATIONS AND EVENTS

From the moment you arrive on campus, you'll see that there's always something going on. We host more than just symposiums and lectures.

Join our student-led clubs and organizations to get involved on campus. Whether it's sampling *crêpes* with the Le Club Français, teaching English classes to locals with our Community ESL program, or reflecting on current events at a roundtable debate led by the Human Rights Club, there's bound to be something for you. Our students publish poetry, bring Shakespeare to life on stage, travel to international Model UN conferences, and so much more.

Can't find the activity you're looking for? We encourage students to charter their own clubs.

Once you're on campus, you will receive our weekly Campus News email, which will tell you all about what's happening on campus and around Madrid.

OPTIONAL TRIPS

Your time at SLU-Madrid wouldn't be complete without excursions around Madrid and beyond. Whether it's a few days walking on the famous Camino de Santiago, our kick-off trip to the picturesque Monasterio de Piedra, or a historical walking tour of Madrid, the Office of Student Life helps you take advantage of everything that Spain has to offer.



INSTAGRAM.COM/SLUMADRID

Have a look at the latest photos from campus and around Madrid on our Instagram page.



FACEBOOK.COM/SLU.MADRID

Follow us on Facebook to stay up to date on campus activities and news.



YOUTUBE.COM/SLUMADRIDCAMPUS

Take a video tour of campus, listen to what current students have to say about living with host families, or check out underwater footage from the oceanography field trip to the Mediterranean.



TWITTER.COM/SLUMADRID

Our Twitter account is the place to go for campus news and facts about Madrid and Spanish culture.



SLU MOBILE APP

Available through the App Store and Google Play. (Click on "Person" and then choose "Madrid" to configure the app to receive SLU-Madrid news).

SPORTS

If you're looking for a way to stay in shape or simply blow off steam, you can sign up for free golf lessons, head out to the mountains to go hiking, play on one of our soccer teams, or join a pickup game of soccer, basketball, or volleyball. Our students participate in over 20 sports around the city, and SLU students get special discounts at gyms and pools in the neighborhood. Here in Madrid, students even play American sports like football, baseball and ultimate frisbee!

If you are a high-level competitive athlete, our Sports Director can assist you in registering with the official sports federation, finding a training center and continuing to compete. SLU-Madrid is proud to partner with the Real Canoe N.C., one of Spain's most important training centers for competitive swimmers. SLU-Madrid offers flexible class schedules and personalized attention in order to allow competitive swimmers to continue their university studies while training at Real Canoe N.C.

CAMPUS MINISTRY AND SERVICE

We welcome and care for students of all faiths and religious traditions. On campus, we have an interfaith chapel and a Catholic chapel, where we hold weekly mass. We can also offer guidance on how to locate places to worship off campus.

The spirit of service is part of what makes Saint Louis University and its Madrid Campus distinct. Our students are involved in dozens of community outreach projects. They teach English to hearing-impaired children, prepare and distribute sandwiches to Madrid's homeless and serve in local soup kitchens, just to name a few.



Stay in touch with our Office of Student Life at: studentlife-madrid@slu.edu

What our

What do you love most about SLU-Madrid?





STUDENT *housing*

WHERE WILL YOU LIVE?

Whether a first-year or transfer student we look forward to welcoming you to our international community on and off campus.

FIRST-YEAR STUDENTS

All first-year students are required to live in one of two student residence halls (*Colegio Mayor El Faro* or *Residencia Galdós*) - university residence halls that are home not only to students from SLU-Madrid, but also other local universities. The residency requirement for students entering in the fall is two semesters whereas for those entering in the spring it is one.

SLU-Madrid has partnered with *Nexo Residencias* to provide an extraordinary residential experience for its first-year students. Safety is our highest priority. Access to the residences and to the rooms is with electronic key cards, and a CCTV system is located in all common areas. Reception is staffed 24/7 and available to help students.

Both residences are located within walking distance from campus and offer amenities you need to support you in your studies and to transition to life in the bustling city of Madrid.

- Amenities include full board, bed linen/towel service, internet and all utilities.
- Well-furnished rooms, with ample storage, individual kitchenettes and bathrooms.
- Meal plan includes full board, 7 days a week (except during the Christmas holidays and Easter week). Arrangements may be made to dine at the SLU - Madrid Unity by Sodexo cafeteria for lunch Monday through Friday.

- Each residence also offers study rooms, game rooms, gyms, dining rooms with terraces and vending areas, laundry service and parking.
- Social, sports and cultural activities and events

The housing application opens in early spring (for fall admission).

Residency Exemption

If you would like to apply for an exemption, you'll need to submit the residency exception form through the housing application platform along with associated documentation. Do not make any arrangements for alternative housing until you are notified by the SLU-Madrid housing office that your exemption has been approved.

TRANSFER STUDENTS

You are free to choose the housing that best fits your needs. Please read carefully through all the information about housing options found on our web page to decide which is best for you.



For more information about housing options in Madrid, email the Housing Coordinator at: housing-madrid@slu.edu

students say

What is your favorite thing about living in Madrid?



GET READY FOR *Madrid!*



By making Madrid your campus, you're choosing to learn outside of the classroom and let Spain's vibrant capital city — the safest in all Spanish-speaking countries — teach you, too.

Madrid is home to more than 3 million people and is the de-facto center of commerce, culture and travel on Iberian Peninsula. Our students take advantage of the best that Madrid has to offer, from world-class museums to professional soccer, street festivals to an incredible music scene.

What's more, Madrid's location is well connected to other Spanish cities and countries in Europe and around the world, thanks to the Adolfo Suárez Madrid-Barajas Airport and excellent public transportation (trains, buses, etc.).

WHAT TO DO IN MADRID

Whatever your interests, Madrid offers something for you! Stroll around the leafy Parque del Buen Retiro or Casa del Campo after a lazy picnic. Catch a soccer match at the hallowed Santiago Bernabéu Stadium or the Atlético de Madrid's Wanda Metropolitano Stadium. Get lost in the Paseo de Arte, made up of three of the world's greatest museums: the Prado, the Reina Sofía and the Thyssen-Bornemisza. History comes alive in the cobblestone streets of the literary district, where chic gastro markets side up to taverns that have been around for a century. Don't miss Madrid's arts scene, which draws in concerts, exhibitions and shows from around the world. And remember, many of Spain's most emblematic cities — Barcelona, Seville, Córdoba and Granada — are reachable by train.



Five reasons why I love my life in Madrid



Leo Borders
Class of 2023
Louisville, KY, U.S.

1. The Culture

"In Madrid people are always 'out and about.' There is a friendly and inclusive vibe. You'll feel like you're part of the community whether you've called Madrid home for a semester, a year, or your whole life."

2. Diversity

"People from all over the world make Madrid their home. This brings a richness to the city: amazing international food, cultural festivals, interesting neighborhoods and more."

3. The Food

"Mediterranean cuisine is known as one of the healthiest in the world and in my opinion, the most delicious! It's hard not to love an evening out for tapas (small dishes) with friends."

4. The Cost of Living

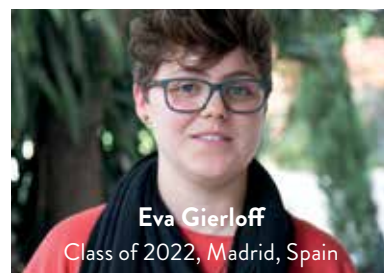
"Madrid is very affordable compared to other large capital cities in Europe. I'm able to enjoy more of the city and everything it has to offer while staying on my budget."

5. Variety

"You can hike in the mountains in the morning, enjoy a delicious lunch with friends in the city at 2 p.m., see world class artwork for free in the afternoon, and watch a world-famous soccer team play a match in the evening. Madrid has it all."

"Desde el día que llegué al campus, SLU-Madrid se convirtió en todo lo que uno espera que sea su universidad. Nada más entrar me encontré con un montón de personas que están siempre dispuestas a regalarte una sonrisa y a ayudarte. Casi todo el mundo te conoce por tu nombre y te sientes como en una gran familia."

"Since the day I arrived to campus, SLU-Madrid has been everything I could have hoped for from my university. From the beginning, I met a lot of people always willing to smile at me and help out. Almost everyone knows me by name and I feel like I'm part of a big family."



Eva Gierloff
Class of 2022, Madrid, Spain

Top five things to do in Madrid



1. Have hot chocolate and churros at the famous San Ginés Chocolatería (open 24 hours a day).
2. Watch a Real Madrid soccer game in the Bernabéu stadium.
3. See world-famous art in the Prado and Reina Sofía museums.
4. Enjoy a sunset picnic at the Templo de Debod park with friends.
5. Wander around the cobblestone streets of the La Latina area of Madrid.



DINING / *Food options*

CAMPUS CAFETERIA: THE UNITY BY SODEXO

From burgers and wraps to Spanish favorites like *paella* or *pollo al chilindrón*, the rotating menu caters to all tastes and budgets, and it's more affordable than eating nearby. Order a traditional *menú del día* (multi-course midday meal), build your own salad, grab a sandwich or coffee to go, or indulge in a sweet treat after a big exam.



IN THE AREA

Just a few blocks away from campus, there are dozens of cafés and restaurants, where you can get everything from a snack to a three-course lunch. And there's also a supermarket so you can get your grocery shopping done on the way home. In the area, you'll find:

A 5-minute walk from campus:

- American style cuisine, including favorites like pancakes and the club sandwich.
- A coffee shop with not only fresh pastries and coffee, but also a salad bar and small sandwiches.

A 7-minute walk from campus:

- Tex-Mex cuisine with reasonably priced nachos and burrito bowls.
- Drinks and small sandwiches for 1-2€. Look out for promotions and special discount days for students!

A 15-minute walk from campus:

- Quick serve Mexican cuisine with legendary *pico de gallo* and *carnitas*.

FINANCING YOUR *SLU-Madrid Education*

SLU-Madrid is committed to providing quality, Jesuit education to our students at an affordable price. Your university degree is an investment in your future, and we want to invest in you. For that reason, SLU-Madrid offers a number of ways to finance your education in addition to merit-based scholarships, which are awarded at the time of admission.

FAFSA

If you're an American citizen or permanent resident and wish to apply for U.S. federal aid, you can fill out the Free Application for Federal Student Aid (FAFSA), a form of need-based aid provided by the U.S. government to eligible students. SLU-Madrid's priority deadline for FAFSA is February 1, though you can apply as early as October 1 of the previous fiscal year. For more information, please see the FAFSA website.

DEPARTMENTAL SUPPORT SCHOLARSHIPS

Departmental Support Scholarship recipients collaborate with various departments across campus, such as Admissions, IT or Marketing. A separate application is required; note that scholarships are limited each semester.

For more information, please email: financialaid-madrid@slu.edu

JESUIT HIGH SCHOOL AWARD

If you have completed the last two years of high school in a Jesuit school, do not already hold a university degree and are entering SLU-Madrid as a first-year student, you may be eligible for this award.

CATHOLIC HIGH SCHOOL SCHOLARSHIP

Entering first-year, degree-seeking students who have completed their last two years of high school at a Catholic high school owned or operated by a Catholic order anywhere in the world are given the Madrid Campus Catholic High School Award with an annual value of 2,000 €.

MADRID CAMPUS ANTIGUOS ALUMNOS AWARD

If your parent(s)/legal guardian(s) is/are SLU graduate(s) who studied for at least one academic year on the Madrid Campus, you may be eligible for this award.

FAMILY AWARD

We offer tuition discounts to families with more than one dependent child enrolled simultaneously at SLU-Madrid and/or the St. Louis campus. There is a separate application that needs to be completed and submitted to the Office of Finance before the official start date of every semester.

PLANNING FOR YOUR EDUCATION

Be sure to plan ahead. Apply early, keep detailed records and get answers to your questions as soon as possible.



If you have any questions or would like to speak with a financial aid officer, please email us at: financialaid-madrid@slu.edu

HEALTH INSURANCE

SLU-Madrid provides all students enrolled in at least one credit with comprehensive medical coverage through Sanitas, a leading provider in Spain, during the term of registration. It can be used for emergencies and to see general practitioners and specialists within the Sanitas network and at Sanitas hospitals.

COME VISIT VIRTUALLY OR IN PERSON!

We're convinced that SLU-Madrid is the right fit for your college education, and we want to show you. Walk-ins are welcome, but scheduling in advance will allow us to make your day bespoke: we invite you to take a tour, have lunch on campus with a current student, participate in an admission interview or get to know faculty with safety protocol in mind. If you can't make it to Madrid, you can visit us virtually! Our Visit Us page, linked with the QR code, has the resources to check out campus space, learn about housing and sign up for virtual Open Campus events or weekly information sessions.



Contact the Office of Admissions to schedule a visit: admissions-madrid@slu.edu

HOW TO GET TO CAMPUS

The SLU-Madrid Campus is located in a quiet neighborhood in central Madrid, just steps from everything the city offers.

Metro

The nearest metro stop to campus is Guzmán el Bueno, on Line 6 (grey) and Line 7 (orange). You can reach us from the airport by taking the metro Line 8 (pink) to Nuevos Ministerios and transferring to Line 6.

Buses and Taxis

Numerous bus lines also stop nearby, and taxis can be found around the city.

Taxis from Barajas Airport

If you're coming from the Adolfo Suárez Madrid-Barajas Airport, the fare to any location in central Madrid is fixed at 30€. Taxis cannot charge an extra fee for luggage.



QUESTIONS?

Our admissions staff is happy to answer any questions you, your parents, or your college counselor may have about SLU-Madrid, life in Spain or the next steps you have to take to become a Billiken. Please contact our offices via email (admissions-madrid@slu.edu) or phone (+34 91 554 5858) with your doubts, concerns or queries. You can also email us to schedule a time for us to call you.

We're looking forward to having you on campus soon and welcoming you to the Saint Louis University – Madrid Campus family!



**SAINT LOUIS
UNIVERSITY
MADRID**